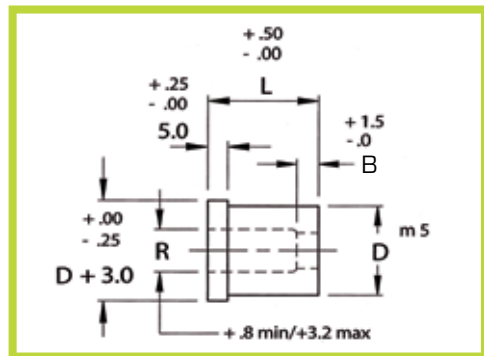


RI_

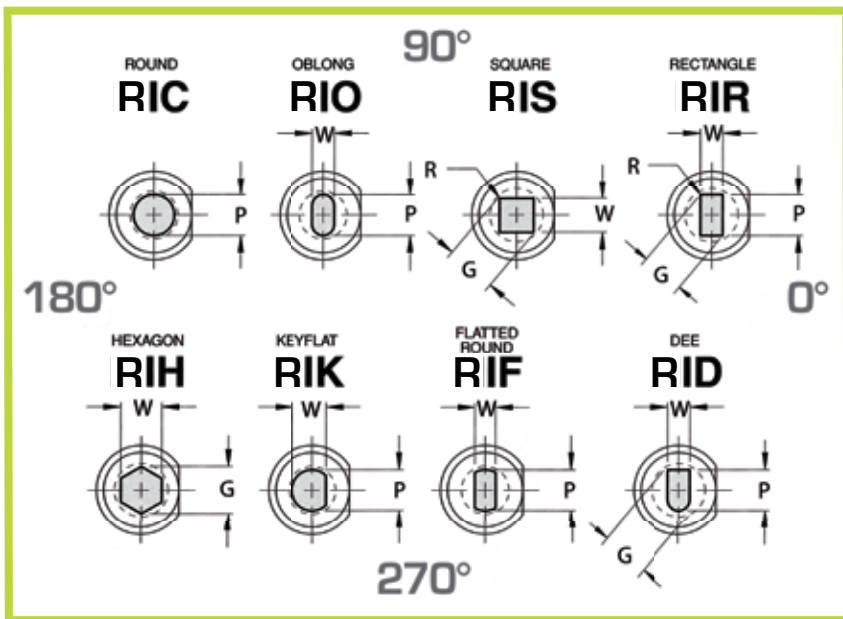
- Matrice press fit con testa
 - Shoulder button counter bore relief



Materiale: Acciaio A2, HRC 58-60
 Material: Steel A2, HRC 58-60



Esempio di ordinativo: RI_ D L P_ W_ F_ Angolo
 Example of purchasing order: RI_ D L P_ W_ F_ Angle



R è variabile in funzione di P
 R is variable depending on P

Codice Code	D	B	Tondo - Round	Forma - Shape		L					
			Intervallo Range P	MIN W	MAX G/P	22	25	28	30	32	35
RI_ 10	10	4.0	1.60 - 5.00	1.60	5.00	•	•	•	•	•	•
RI_ 13	13	5.0	1.80 - 7.20	1.80	7.20	•	•	•	•	•	•
RI_ 16	16	5.0	5.00 - 8.80	2.50	8.80	•	•	•	•	•	•
RI_ 20	20	5.0	5.50 - 11.00	3.20	11.00	•	•	•	•	•	•
RI_ 22	22	6.0	7.50 - 14.00	4.00	14.00	•	•	•	•	•	•
RI_ 25	25	6.0	9.50 - 16.50	4.80	16.50	•	•	•	•	•	•
RI_ 32	32	6.0	13.00 - 20.00	5.50	20.00	•	•	•	•	•	•
RI_ 38	38	8.0	16.00 - 26.00	6.40	26.00	•	•	•	•	•	•
RI_ 40	40	8.0	16.50 - 26.00	6.50	26.30	•	•	•	•	•	•

