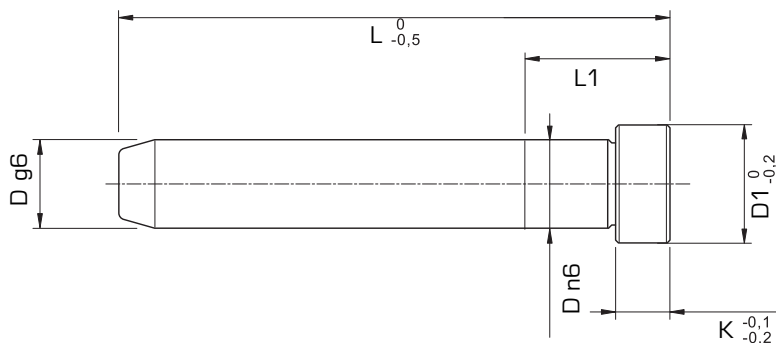


### R0529

Colonna guida liscia con forzatura  
Smooth inclined pin with cylindrical collar



Codice Code	D	D1	L	L1	K
R0529-03-0001	14	17	60	22	8
R0529-03-0002	14	17	80	22	8
R0529-03-0003	14	17	100	22	8
R0529-03-0004	14	17	120	22	8
R0529-03-0005	14	17	140	22	8
R0529-03-0006	14	17	160	22	8
R0529-03-0007	14	17	180	22	8
R0529-03-0008	16	19	60	22	8
R0529-03-0009	16	19	80	22	8
R0529-03-0010	16	19	100	22	8
R0529-03-0011	16	19	120	22	8
R0529-03-0012	16	19	140	22	8
R0529-03-0013	16	19	160	22	8
R0529-03-0014	16	19	180	22	8
R0529-03-0015	16	19	200	22	8
R0529-03-0016	18	21	60	22	8
R0529-03-0017	18	21	80	22	8
R0529-03-0018	18	21	100	22	8
R0529-03-0019	18	21	120	22	8
R0529-03-0020	18	21	140	22	8
R0529-03-0021	18	21	160	22	8
R0529-03-0022	18	21	180	22	8
R0529-03-0023	18	21	200	22	8
R0529-03-0024	18	21	220	22	8
R0529-03-0025	18	21	240	22	8
R0529-03-0026	20	23	80	22	8
R0529-03-0027	20	23	100	22	8
R0529-03-0028	20	23	120	22	8
R0529-03-0029	20	23	140	22	8
R0529-03-0030	20	23	160	22	8
R0529-03-0031	20	23	180	22	8
R0529-03-0032	20	23	200	22	8
R0529-03-0033	20	23	220	22	8
R0529-03-0034	20	23	240	22	8
R0529-03-0035	22	25	80	27	10
R0529-03-0036	22	25	100	27	10
R0529-03-0037	22	25	120	27	10
R0529-03-0038	22	25	140	27	10
R0529-03-0039	22	25	160	27	10
R0529-03-0040	22	25	180	27	10
R0529-03-0041	22	25	200	27	10
R0529-03-0042	22	25	220	27	10
R0529-03-0043	22	25	240	27	10

Codice Code	D	D1	L	L1	K
R0529-03-0044	22	25	280	27	10
R0529-03-0045	24	27	80	27	10
R0529-03-0046	24	27	100	27	10
R0529-03-0047	24	27	120	27	10
R0529-03-0048	24	27	140	27	10
R0529-03-0049	24	27	160	27	10
R0529-03-0050	24	27	180	27	10
R0529-03-0051	24	27	200	27	10
R0529-03-0052	24	27	220	27	10
R0529-03-0053	24	27	240	27	10
R0529-03-0054	24	27	280	27	10
R0529-03-0055	30	35	100	36	10
R0529-03-0056	30	35	120	36	10
R0529-03-0057	30	35	140	36	10
R0529-03-0058	30	35	160	36	10
R0529-03-0059	30	35	180	36	10
R0529-03-0060	30	35	200	36	10
R0529-03-0061	30	35	220	36	10
R0529-03-0062	30	35	240	36	10
R0529-03-0063	30	35	280	36	10
R0529-03-0064	30	35	320	36	10
R0529-03-0065	30	35	360	36	10
R0529-03-0066	32	35	100	36	10
R0529-03-0067	32	35	120	36	10
R0529-03-0068	32	35	140	36	10
R0529-03-0069	32	35	160	36	10
R0529-03-0070	32	35	180	36	10
R0529-03-0071	32	35	200	36	10
R0529-03-0072	32	35	220	36	10
R0529-03-0073	32	35	240	36	10
R0529-03-0074	32	35	280	36	10
R0529-03-0075	32	35	320	36	10
R0529-03-0076	32	35	360	36	10
R0529-03-0077	40	45	140	36	10
R0529-03-0078	40	45	160	36	10
R0529-03-0079	40	45	180	36	10
R0529-03-0080	40	45	200	36	10
R0529-03-0081	40	45	250	36	10
R0529-03-0082	40	45	280	36	10
R0529-03-0083	40	45	320	36	10
R0529-03-0084	40	45	360	36	10
R0529-03-0085	40	45	400	36	10