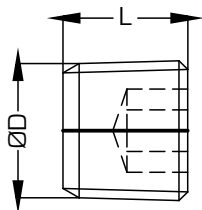


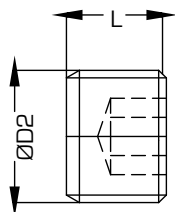
## R0396 Tappo conico DIN 906 / Conical plug DIN 906



Materiale: Ottone  
Material: Brass

Ordine Nr. / Order No.	ØD	L	ES. HEX.
R0396-09-0001	BSPT 1/8"	8	5
R0396-09-0002	BSPT 1/4"	10	7
R0396-09-0003	BSPT 3/8"	10	8
R0396-09-0004	BSPT 1/2"	10	10
R0396-09-0005	M8x075	8	4
R0396-09-0006	M10x1	8	5
R0396-09-0007	M12x1.5	8	6
R0396-09-0008	M14x1.5	10	7

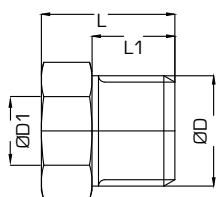
## R0397 Tappo cilindrico / Cylindrical plug



Materiale: Ottone  
Material: Brass

Ordine Nr. / Order No.	ØD	L	ES. HEX.
R0397-09-0001	BSP 1/8"	8	5
R0397-09-0002	BSP 1/4"	10	7
R0397-09-0003	BSP 3/8"	10	8
R0397-09-0004	BSP 1/2"	10	10
R0397-09-0005	M8x075	8	4
R0397-09-0006	M10x1	8	5
R0397-09-0007	M12x1.5	8	6
R0397-09-0008	M14x1.5	10	7

## R0506 Adattatore con cono interno con filettatura maschio DIN 3863 / Male thread adapter with inner cone DIN 3863



Ordine Nr. / Order No.	ØD	ØD1	L	L1	ES. HEX.
R0506-09-0001	BSP 1/4"	BSP 1/8"	11	7	17
R0506-09-0002	BSP 3/8"	BSP 1/4"	13	9	19
R0506-09-0003	BSP 1/2"	BSP 3/8"	18	12	24
R0506-09-0004	BSP 3/4"	BSP 1/2"	24	16	27
R0506-09-0005	M14x1.5	M10x1	11	7	17
R0506-09-0006	M18x1.5	M14x1.5	14	9	21
R0506-09-0007	M24x1.5	M16x1.5	24	16	27

Esempio di ordinativo: Codice  
Example of purchasing order: Code