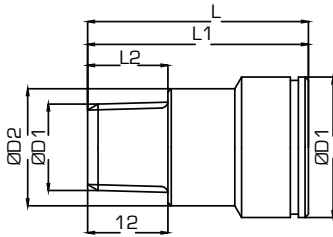


R0383

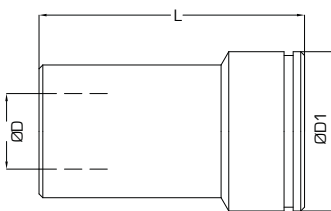
Attacco con filetto maschio / Male thread socket



Ordine Nr. / Order No.	ØD	ØD1	ØD2	L	L1	L2	ES. INT. INNER HEX.
R0383-09-0001	BSPT 1/8"	17	14	28.5	18.5	7.5	6
R0383-09-0002	BSPT 1/4"	17	14	28.5	15.5	11	6
R0383-09-0003	NPT 1/8"	17	14	28.5	18.5	7	6
R0383-09-0004	NPT 1/4"	17	-	28.5	-	11	6
R0383-09-0005	M10x1	17	14	28.5	18.5	8	6
R0383-09-0006	BSPT 1/8"	21	17.5	32	22	8	6
R0383-09-0007	BSPT 1/4"	21	17.5	33	21	10	8
R0383-09-0008	BSPT 3/8"	21	-	24	11	11	8
R0383-09-0009	NPT 1/8"	21	17.5	32	22	7	1/4"
R0383-09-0010	NPT 1/4"	21	17.5	33	21	11	5/16"
R0383-09-0011	NPT 3/8"	21	-	24	11	11	5/16"
R0383-09-0012	M10x1	21	17.5	32	22	8	6
R0383-09-0013	M10x1.5	21	17.5	32	22	8	6
R0383-09-0014	M14x1.5	21	17.5	32	21	8	6
R0383-09-0015	BSPT 3/8"	32	25	41	28	11	10
R0383-09-0016	BSPT 1/2"	32	25	44	28	14	14
R0383-09-0017	BSPT 3/4"	32	-	32	13	16.5	14
R0383-09-0018	NPT 3/8"	32	25	41	28	11	3/8"
R0383-09-0019	NPT 1/2"	32	25	44	28	14	9/16"
R0383-09-0020	NPT 3/4"	32	-	32	13	14	9/16"

R0384

Attacco con filetto femmina / Female thread socket



Ordine Nr. / Order No	ØD	ØD1	L1	ES. INT. INNER HEX.
R0384-09-0001	BSP 1/8"	21	35	6
R0384-09-0002	BSP 1/4"	21	39	8
R0384-09-0003	NPT 1/8"	21	35	1/4"
R0384-09-0004	NPT 1/4"	21	39	5/16"
R0384-09-0005	BSP 3/8"	32	49	12
R0384-09-0006	BSP 1/2"	32	50	12

Esempio di ordinativo: Codice
Example of purchasing order: Code