

强力氮气弹簧是我们产品中靠柱塞杆密封的最矮、弹压力最大的氮气弹簧。它可以在很小的模具内提供非常大的弹压力。此系列氮气弹簧的弹压力从1700 N到 200000 N，工作行程从7至125mm。

此系列气弹簧在缸侧面有一个充气口，也可以使用这个充气口，用于微型管路连接系统。

缸体上部有一个C形槽，缸体下部有一个U形槽，它们同缸体底部四个M10螺孔一起，提供了各种安装可能性。

The Power Line Series includes our shortest and most powerful Piston Rod Sealed gas springs, offering impressive force in a very compact format.

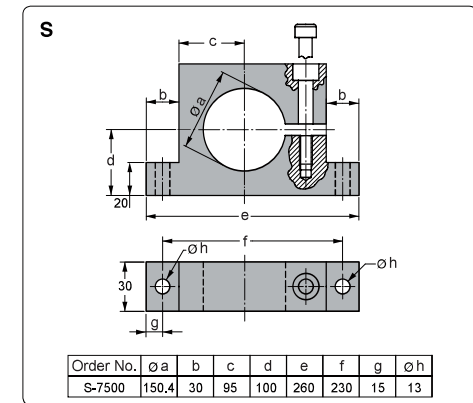
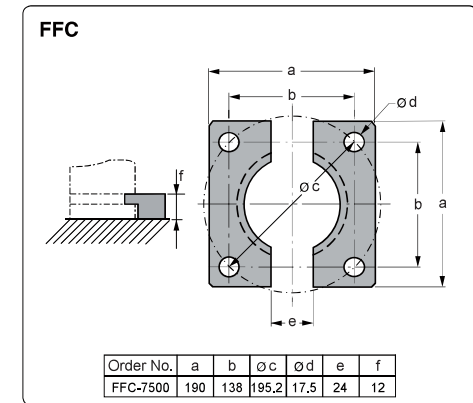
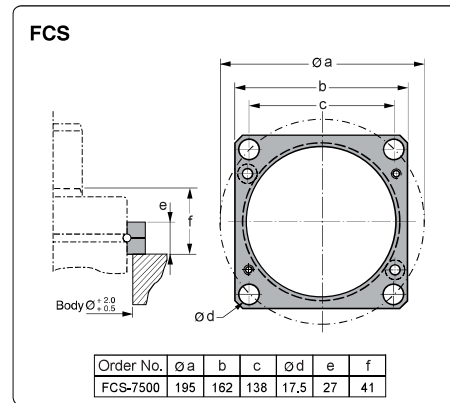
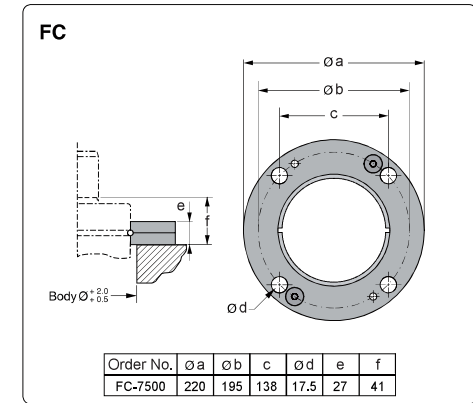
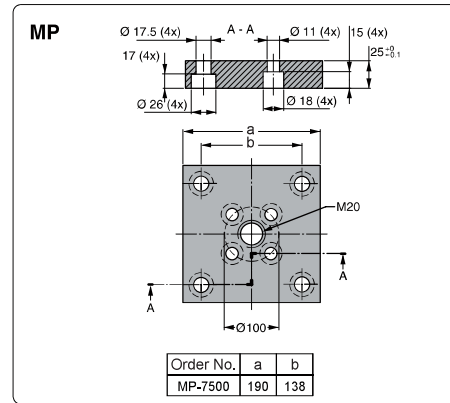
The Power Line springs are available with forces from 1,700 N up to 200,000 N and stroke lengths between 7 and 125 mm.

There is a side port for gas charging that can also be used to connect to a gas link system.

An upper C-groove, lower U-groove together with four M10 threaded holes allow various mounting possibilities using our standard mounts.

Order No.	行程 Stroke S	弹压力N在150bar/+20°C		L±0.25	Lmin
		初始力 Initial	终始力* End force*		
GX9500-019	19	95000	135000	116	97
GX9500-025	25		139000	128	103
GX9500-032	32		142000	142	110
GX9500-038	38		143000	154	116
GX9500-050	50		146000	178	128
GX9500-063	63		148000	204	141
GX9500-075	75		149000	228	153
GX9500-080	80		150000	238	158
GX9500-100	100		151000	278	178
GX9500-125	125		152000	328	203

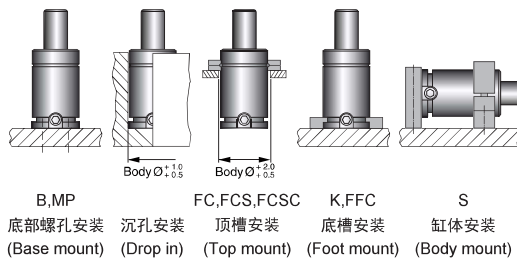
*=在全行程 at full stroke



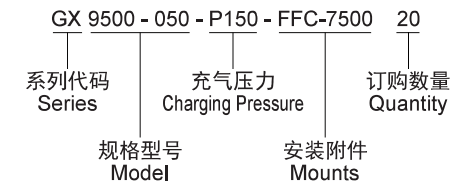
基本参数 Basic information

- 充气介质 ----- 氮气 Nitrogen
Pressure medium
- 最大充气压力 ----- 150 bar(at 20°C)
Max.charging pressure
- 最小充气压力 ----- 25 bar(at 20°C)
Min.charging pressure
- 工作环境温度 ----- 0~80°C
Operating temperature
- 单位温度弹压力增量 ----- ±0.3%/°C
Force increase by temperature
- 推荐每分钟工作频率 ----- 20-80spm(20°C)
Recommended working frequency
- 最大工作速度 ----- 96 m/min
Max.piston rod velocity

几种安装可能性 Mounting Possibilities



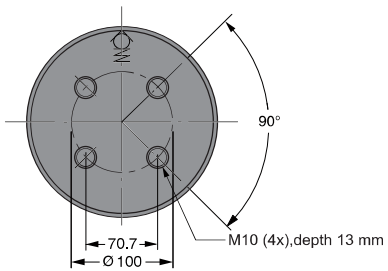
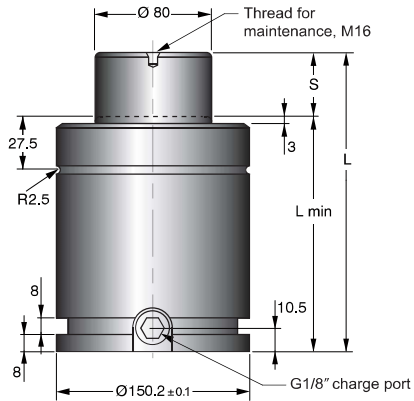
订购方法 Ordering method





氮气弹簧的标准系是GTU系列。
其规格从250到10000的氮气弹簧都符合国际ISO 11901标准。

The standard line of gas springs is the GTU line.
Sizes 250 to 10 000 correspond to the ISO 11901 standard for gas springs.



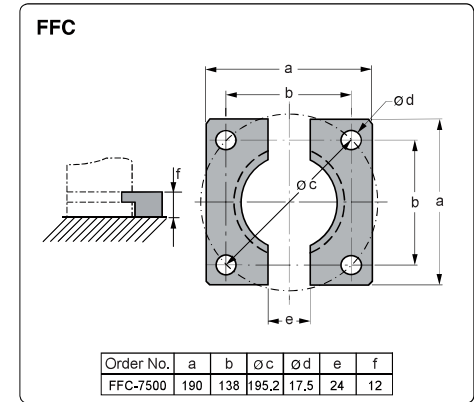
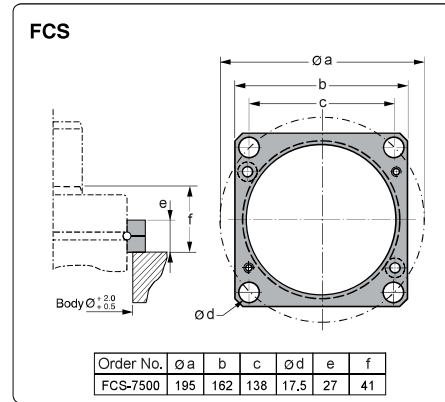
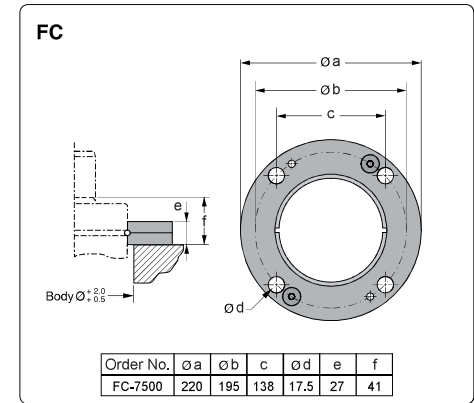
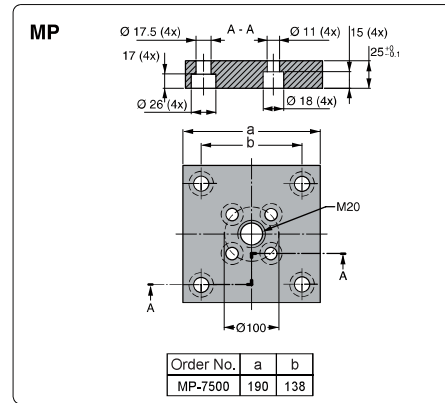
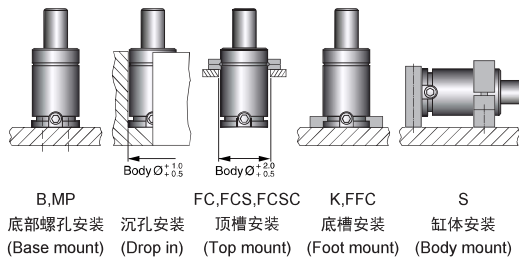
Order No.	行程 Stroke S	弹压力N在150bar/+20°C		L±0.25	Lmin
		初始力 Initial	终始力* End force*		
GTU7500-025	25	75000	105000	205	180
GTU7500-038	38.1		110000	231.2	193.1
GTU7500-050	50		113000	255	205
GTU7500-064	63.5		115000	282	218.5
GTU7500-080	80		117000	315	235
GTU7500-100	100		119000	355	255
GTU7500-125	125		121000	405	280
GTU7500-160	160		122000	475	315
GTU7500-200	200		123000	555	355
GTU7500-250	250		124000	655	405
GTU7500-300	300	124000	755	455	

*=在全行程 at full stroke

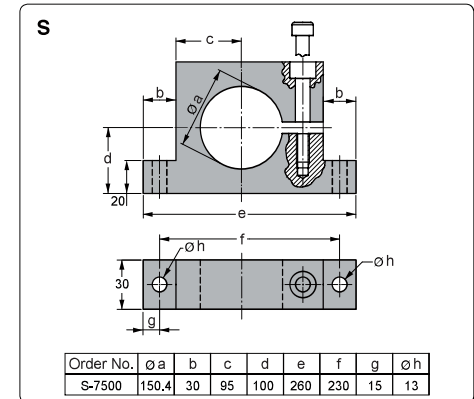
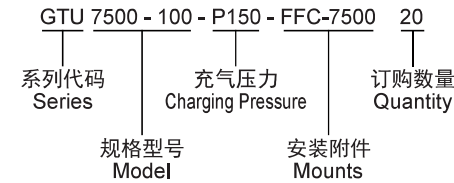
基本参数 Basic information

- 充气介质 ----- 氮气 Nitrogen
Pressure medium
- 最大充气压力 ----- 150 bar (at 20°C)
Max. charging pressure
- 最小充气压力 ----- 25 bar (at 20°C)
Min. charging pressure
- 工作环境温度 ----- 0~80°C
Operating temperature
- 单位温度弹压力增量 ----- ±0.3%/°C
Force increase by temperature
- 推荐每分钟工作频率 ----- 20-80spm (20°C)
Recommended working frequency
- 最大工作速度 ----- 96 m/min
Max. piston rod velocity

几种安装可能性 Mounting Possibilities



订购方法 Ordering method



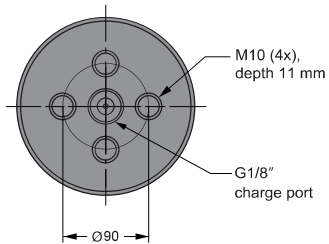
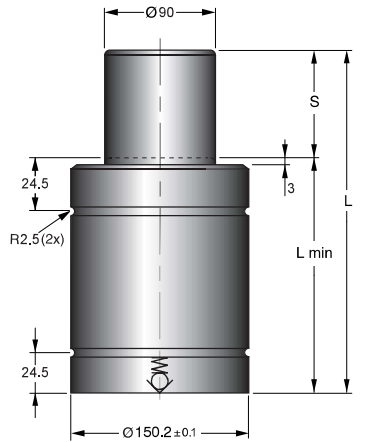


GCU是一种结构非常紧凑的活塞式氮气弹簧，在有效的空间中，能够提供非常大的弹压力，这种氮气弹簧最大频次数可达到100次/分。

此氮气弹簧行程超过25mm时，应当采用法兰安装或氮气弹簧底部螺纹安装。我们推荐对于短行程的应用，最好也要紧固产品，以便获得最佳的使用寿命。

The GCU gas springs are a very compact Bore Sealed gas springs, offering impressive force in a compact body. The maximum frequency for the spring is 100 strokes/minute.

Springs with stroke lengths over 25 mm should always be attached to the tool, using a flange or the tapped holes in the bottom of the spring. We also recommend fixing of shorter stroke springs for optimal service life.



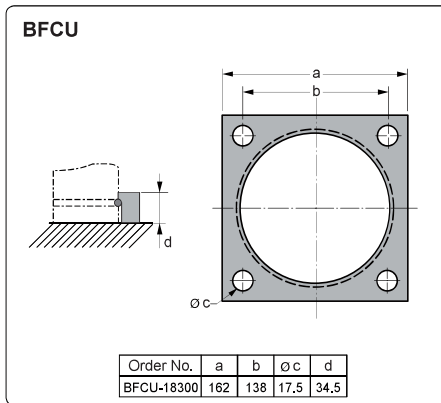
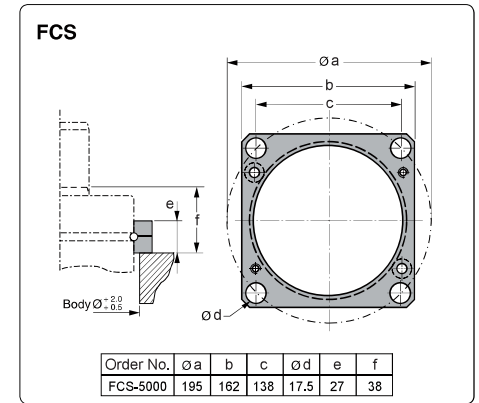
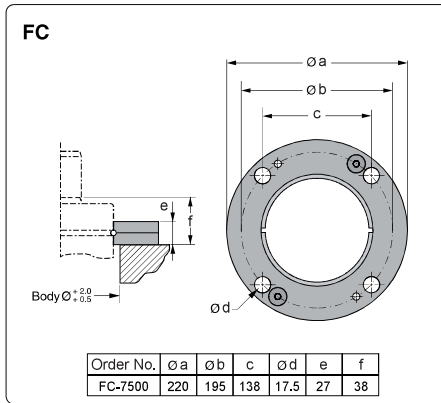
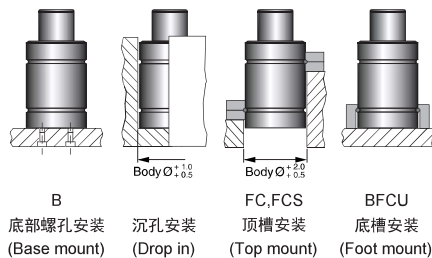
Order No.	行程 Stroke S	弹压力N在150bar/+20°C		L±0.25	Lmin
		初始力 Initial	终始力* End force*		
GCU18300-010	10	183000	227000	110	100
GCU18300-016	16		233000	136	120
GCU18300-025	25		244000	165	140
GCU18300-032	32		244000	197	165
GCU18300-040	40		244000	235	195
GCU18300-050	50		248000	270	220

*=在全行程 at full stroke

基本参数 Basic information

- 充气介质 ----- 氮气 Nitrogen
Pressure medium
- 最大充气压力 ----- 150 bar(at 20°C)
Max.charging pressure
- 最小充气压力 ----- 25 bar(at 20°C)
Min.charging pressure
- 工作环境温度 ----- 0~80°C
Operating temperature
- 单位温度弹压力增量 ----- ±0.3%/°C
Force increase by temperature
- 推荐每分钟工作频率 ----- 20-80spm(20°C)
Recommended working frequency
- 最大工作速度 ----- 96 m/min
Max.piston rod velocity

几种安装可能性 Mounting Possibilities



订购方法 Ordering method

