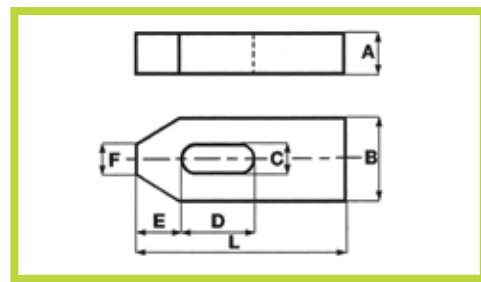


# S210

- Staffa semplice (DIN 6314)

- Standard clamp (DIN 6314)



Materiale: Acciaio da bonifica verniciato R.>700 N/mm<sup>2</sup>

Material: Hardened painted steel R.>700 N/mm<sup>2</sup>

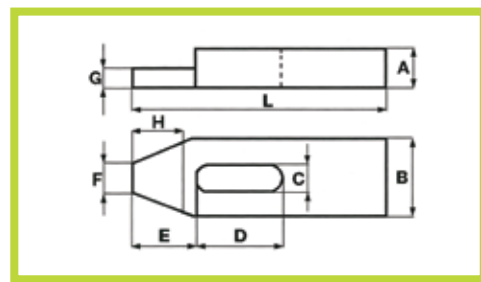
Esempio di ordinativo : Codice  
Example of purchasing order : Code

Codice/Code	A	B	L	C	D	E	F		gr
S210.07050	10	20	50	7	20	10	8	6	65
S210.09060	12	25	60	9	22	13	10	8	115
S210.11080	15	30	80	11	30	15	12	10	225
S210.14100	20	40	100	14	40	21	14	12 - 14	500
S210.14125	20	40	125	14	50	21	14	12 - 14	620
S210.14160	20	40	160	14	65	21	14	12 - 14	815
S210.18125	25	50	125	18	45	26	18	16 - 18	980
S210.18160	25	50	160	18	65	26	18	16 - 18	1260
S210.18200	25	50	200	18	80	26	18	16 - 18	1600
S210.22160	30	60	160	22	60	30	22	20 - 22	1850
S210.22200	30	60	200	22	80	30	22	20 - 22	2300
S210.26200	30	70	200	26	80	35	26	24	2650
S210.26250	30	70	250	26	105	35	26	24	3300
S210.34250	40	80	250	34	100	45	34	27 - 30	5000
S210.34315	40	80	315	34	130	45	34	27 - 30	6200

# S211

- Staffa semplice ridotta

- Shaped standard clamp



Materiale: Acciaio da bonifica verniciato R.>700 N/mm<sup>2</sup>

Material: Hardened painted steel R.>700 N/mm<sup>2</sup>

Esempio di ordinativo : Codice  
Example of purchasing order : Code

Codice/Code	G	A	B	L	C	D	E	F	H		gr
S211.07050	6	10	20	50	7	20	10	8	7	6	60
S211.09060	7	12	25	60	9	22	13	10	10	8	140
S211.11080	9	15	30	80	11	30	15	12	9	10	220
S211.14100	12	20	40	100	14	40	21	12	12	12 - 14	480
S211.14125	12	20	40	125	14	50	21	14	12	12 - 14	615
S211.14160	12	20	40	160	14	65	26	14	12	12 - 14	800
S211.18125	15	25	50	125	18	45	26	18	15	16 - 18	960
S211.18160	15	25	50	160	18	65	26	18	15	16 - 18	1230
S211.18200	15	25	50	200	18	80	26	18	15	16 - 18	1550
S211.22160	20	30	60	160	22	60	30	22	20	20 - 22	1800
S211.22200	20	30	60	200	22	80	30	22	20	20 - 22	2200
S211.26200	20	30	70	200	26	80	35	26	25	24	2450
S211.26250	20	30	70	250	26	105	35	26	25	24	3200
S211.34250	25	40	80	250	34	100	45	34	25	27 - 30	4800
S211.34315	25	40	80	315	34	130	45	34	25	27 - 30	6000