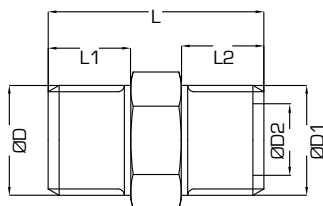


## R0507

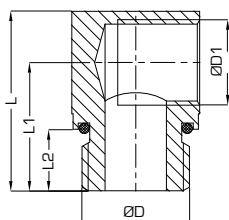
### Adattatore con filetto maschio - maschio / Male - Male thread adapter



Ordine Nr. / Order No.	ØD	D1	D2	L	L1	L2	ES. HEX.
R0507-09-0001	BSP 1/4"	BSP 1/4"	6	23	9	9	17
R0507-09-0002	BSP 3/8"	BSP 3/8"	9	23	9	9	19
R0507-09-0003	BSP 1/2"	BSP 1/2"	13	30	12	12	22
R0507-09-0004	BSP 3/4"	BSP 3/4"	13	40	16	16	27
R0507-09-0005	BSP 1/4"	M14x1.5	6	23	9	9	17
R0507-09-0006	BSP 1/4"	M16x1.5	6	23	9	9	19
R0507-09-0007	BSP 3/8"	M14x1.5	8	23	9	9	19
R0507-09-0008	BSP 3/8"	M16x1.5	9	23	9	9	19
R0507-09-0009	BSP 1/2"	M14x1.5	6	30	12	9	22
R0507-09-0010	BSP 1/2"	M16x1.5	9	30	12	9	22
R0507-09-0011	BSP 1/2"	M24x1.5	13	36	16	12	27
R0507-09-0012	BSP 3/4"	M24x1.5	13	40	16	16	27
R0507-09-0013	M14x1.5	M14x1.5	6	23	9	9	17
R0507-09-0014	M16x1.5	M16x1.5	9	23	9	9	19
R0507-09-0015	M24x1.5	M24x1.5	13	40	16	16	27
R0507-09-0016	M14x1.5	M16x1.5	9	23	9	9	17
R0507-09-0017	M14x1.5	M18x1.5	9	26	12	9	19
R0507-09-0018	M16x1.5	M18x1.5	9	26	12	9	19

## R0508

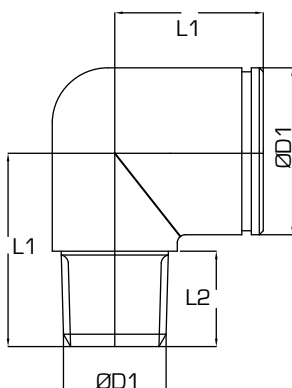
### Adattatore a 90° con filetto maschio - femmina / Male - female thread adapter 90°



Ordine Nr. / Order No.	ØD	ØD1	L	L1	L2	ES. HEX.
R0508-09-0001	BSP 1/4"	BSP 1/8"	25	17	9	15
R0508-09-0002	BSP 3/8"	BSP 1/4"	27.5	19	9	20
R0508-09-0003	BSP 1/2"	BSP 3/8"	35	25	15	25

## R0509

### Raccordo a 90° con filetto maschio / Male thread socket 90°



Ordine Nr. / Order No	ØD	ØD1	L	L1	L2	ES. INT. INNER HEX.
R0509-09-0001	BSPT 1/8"	22	23	22	10	19
R0509-09-0002	BSPT 1/4"	22	25	22	12	19
R0509-09-0003	BSPT 3/8"	22	26	22	13	19
R0509-09-0004	NPT 1/4"	22	27	22	14	19

Esempio di ordinativo: Codice  
Example of purchasing order: Code