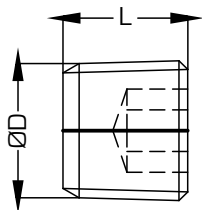


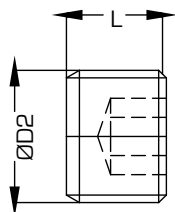
## R0396 Tappo conico DIN 906 / Conical plug DIN 906



Materiale: Ottone  
Material: Brass

| Ordine Nr. / Order No. | ØD        | L  | ES. HEX. |
|------------------------|-----------|----|----------|
| R0396-09-0001          | BSPT 1/8" | 8  | 5        |
| R0396-09-0002          | BSPT 1/4" | 10 | 7        |
| R0396-09-0003          | BSPT 3/8" | 10 | 8        |
| R0396-09-0004          | BSPT 1/2" | 10 | 10       |
| R0396-09-0005          | M8x075    | 8  | 4        |
| R0396-09-0006          | M10x1     | 8  | 5        |
| R0396-09-0007          | M12x1.5   | 8  | 6        |
| R0396-09-0008          | M14x1.5   | 10 | 7        |

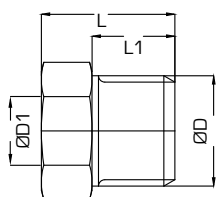
## R0397 Tappo cilindrico / Cylindrical plug



Materiale: Ottone  
Material: Brass

| Ordine Nr. / Order No. | ØD       | L  | ES. HEX. |
|------------------------|----------|----|----------|
| R0397-09-0001          | BSP 1/8" | 8  | 5        |
| R0397-09-0002          | BSP 1/4" | 10 | 7        |
| R0397-09-0003          | BSP 3/8" | 10 | 8        |
| R0397-09-0004          | BSP 1/2" | 10 | 10       |
| R0397-09-0005          | M8x075   | 8  | 4        |
| R0397-09-0006          | M10x1    | 8  | 5        |
| R0397-09-0007          | M12x1.5  | 8  | 6        |
| R0397-09-0008          | M14x1.5  | 10 | 7        |

## R0506 Adattatore con cono interno con filettatura maschio DIN 3863 / Male thread adapter with inner cone DIN 3863



| Ordine Nr. / Order No. | ØD       | ØD1      | L  | L1 | ES. HEX. |
|------------------------|----------|----------|----|----|----------|
| R0506-09-0001          | BSP 1/4" | BSP 1/8" | 11 | 7  | 17       |
| R0506-09-0002          | BSP 3/8" | BSP 1/4" | 13 | 9  | 19       |
| R0506-09-0003          | BSP 1/2" | BSP 3/8" | 18 | 12 | 24       |
| R0506-09-0004          | BSP 3/4" | BSP 1/2" | 24 | 16 | 27       |
| R0506-09-0005          | M14x1.5  | M10x1    | 11 | 7  | 17       |
| R0506-09-0006          | M18x1.5  | M14x1.5  | 14 | 9  | 21       |
| R0506-09-0007          | M24x1.5  | M16x1.5  | 24 | 16 | 27       |

Esempio di ordinativo: Codice  
Example of purchasing order: Code