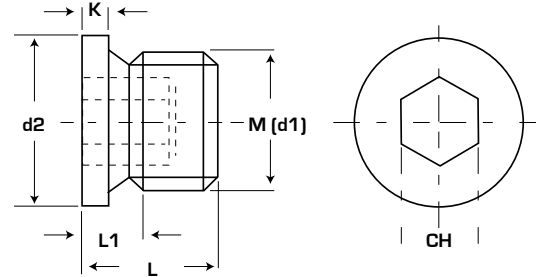


R0169

Tappo cilindrico con battuta DIN 908
Cylindrical plug with head DIN 908



Descrizione:

Description:

Materiale: Acciaio 5.8 fosfatato

Material: Steel 5.8 phosphated

Passi metrici

Meters sizes

Codice Code	D	K	L	M	CH hexagon	Passo step
R0169-01-0001	12	3	11	M8	4	1
R0169-01-0002	14	3	11	M10	5	1
R0169-01-0003	17	3	15	M12	6	1,5
R0169-01-0004	19	3	15	M14	6	1,5
R0169-01-0005	21	3	15	M16	8	1,5
R0169-01-0006	23	4	16	M18	8	1,5
R0169-01-0007	25	4	18	M20	10	1,5
R0169-01-0008	27	4	18	M22	10	1,5
R0169-01-0009	29	4	18	M24	12	1,5
R0169-01-0010	31	4	20	M26	12	1,5
R0169-01-0011	32	4	20	M27	12	2
R0169-01-0012	36	4	20	M30	17	1,5
R0169-01-0013	39	5	21	M33	17	2
R0169-01-0014	42	5	21	M36	19	1,5
R0169-01-0015	44	5	21	M38	19	1,5
R0169-01-0016	49	5	21	M42	22	1,5
R0169-01-0017	52	5	21	M45	22	1,5
R0169-01-0018	55	5	21	M48	24	1,5

Passi in pollici

Inches sizes

Codice Code	D	K	L	M	CH hexagon
R0169-01-0019	G1/8"	14	11	3	5
R0169-01-0020	G1/4"	18	15	3	6
R0169-01-0021	G3/8"	22	15	3	8
R0169-01-0022	G1/2"	26	18	4	10
R0169-01-0023	G3/4"	32	20	4	12
R0169-01-0024	G1"	39	21	5	17
R0169-01-0025	G1-1/4"	49	21	5	22
R0169-01-0026	G1-1/2"	55	21	5	24
R0169-01-0027	G2"	68	25	5	32

Esempio di ordinativo: Codice
Example of purchasing order: Code