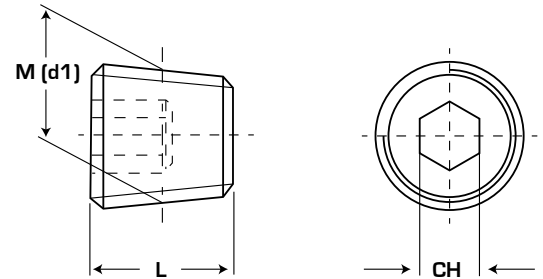


R0168

Tappo conico DIN 906
Conical plug DIN 906



Descrizione:

Description:

Materiale: Acciaio 5.8 fosfatato

Material: Steel 5.8 phosphated

**Passi metrici
Meters sizes**

Codice Code	L	M	CH hexagon	Passo step
R0168-01-0001	6	M6	3	1
R0168-01-0002	8	M8	4	1
R0168-01-0003	8	M10	5	1
R0168-01-0004	10	M12	6	1,5
R0168-01-0005	10	M14	7	1,5
R0168-01-0006	10	M16	8	1,5
R0168-01-0007	10	M18	8	1,5
R0168-01-0008	10	M20	10	1,5
R0168-01-0009	10	M22	10	1,5
R0168-01-0010	12	M24	12	1,5
R0168-01-0011	12	M26	12	1,5
R0168-01-0012	12	M30	17	1,5
R0168-01-0013	15	M36	19	1,5
R0168-01-0014	15	M38	19	1,5
R0168-01-0015	18	M42	22	1,5
R0168-01-0016	18	M42	22	2
R0168-01-0017	20	M48	24	1,5
R0168-01-0018	20	M48	24	2

**Passi in pollici
Inches sizes**

Codice	L	M	CH hexagon
R0168-01-0019	8	G1/8"	5
R0168-01-0020	10	G1/4"	7
R0168-01-0021	10	G3/8"	8
R0168-01-0022	10	G1/2"	10
R0168-01-0023	12	G3/4"	12
R0168-01-0024	12	G1"	17
R0168-01-0025	18	G1-1/4"	22
R0168-01-0026	22	G1-1/2"	24

Esempio di ordinativo: Codice
Example of purchasing order: Code