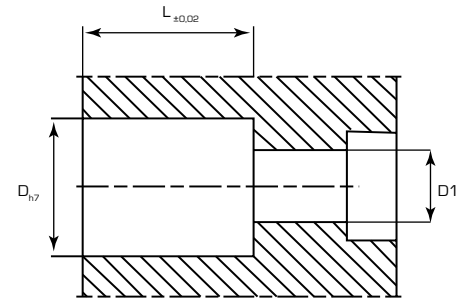
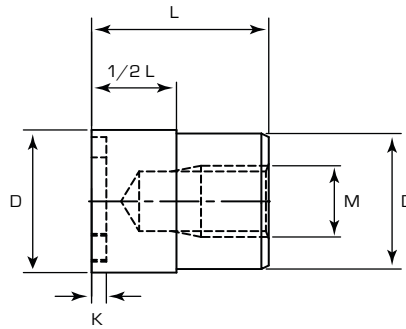


# R0140

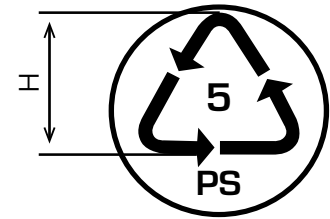
- Inserto di riciclo  
- Recycling insert



Materiale: Acciaio inossidabile  
Material: Stainless Steel

Durezza: 48-52 HRC  
Hardness: 48-52 HRC

D	L	K	D1	M	H
6	12	0,2	3,5	M3	3,6
8	12	0,2	4,5	M4	4,8
10	12	0,3	5,5	M5	6
12	14	0,3	6,5	M6	8
16	14	0,3	6,5	M6	10
20	16	0,3	6,5	M6	12
25 (**)	16	0,3	6,5	M6	15



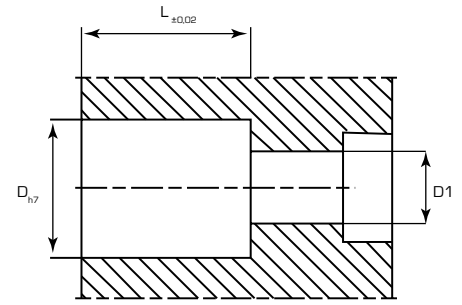
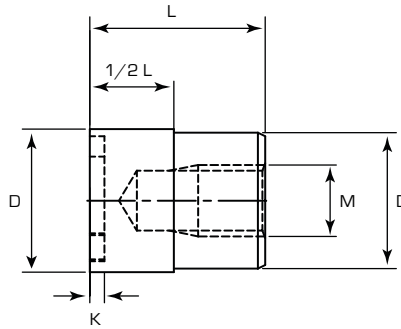
(*)	Codice Code	D	(*)	Codice Code	D
	R0140-01-0001	6		R0140-01-0031	6
	R0140-01-0002	8		R0140-01-0032	8
	R0140-01-0003	10		R0140-01-0033	10
	R0140-01-0121	12		R0140-01-0127	12
	R0140-01-0004	16		R0140-01-0034	16
R0140-01-0005	20	R0140-01-0035	20		
	R0140-01-0006	6		R0140-01-0036	6
	R0140-01-0007	8		R0140-01-0037	8
	R0140-01-0008	10		R0140-01-0038	10
	R0140-01-0122	12		R0140-01-0128	12
	R0140-01-0009	16		R0140-01-0039	16
R0140-01-0010	20	R0140-01-0040	20		
	R0140-01-0011	6		R0140-01-0041	6
	R0140-01-0012	8		R0140-01-0042	8
	R0140-01-0013	10		R0140-01-0043	10
	R0140-01-0123	12		R0140-01-0129	12
	R0140-01-0014	16		R0140-01-0044	16
R0140-01-0015	20	R0140-01-0045	20		
	R0140-01-0016	6		R0140-01-0046	6
	R0140-01-0017	8		R0140-01-0047	8
	R0140-01-0018	10		R0140-01-0048	10
	R0140-01-0124	12		R0140-01-0130	12
	R0140-01-0019	16		R0140-01-0049	16
R0140-01-0020	20	R0140-01-0050	20		
	R0140-01-0021	6		R0140-01-0051	6
	R0140-01-0022	8		R0140-01-0052	8
	R0140-01-0023	10		R0140-01-0053	10
	R0140-01-0125	12		R0140-01-0131	12
	R0140-01-0024	16		R0140-01-0054	16
R0140-01-0025	20	R0140-01-0055	20		
	R0140-01-0026	6		R0140-01-0056	6
	R0140-01-0027	8		R0140-01-0057	8
	R0140-01-0028	10		R0140-01-0058	10
	R0140-01-0126	12		R0140-01-0132	12
	R0140-01-0029	16		R0140-01-0059	16
R0140-01-0030	20	R0140-01-0060	20		

**Note:**  
\* - Immagini speculari \* - Mirror images  
\*\* - Disponibile su richiesta \*\* - Available upon request

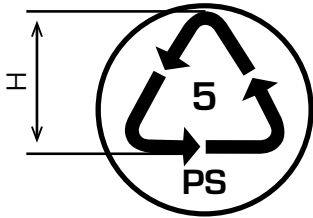
Esempio di ordinativo: Codice  
Example of purchasing order: Code

# R0140

- Inserto di riciclo  
- Recycling insert



Materiale: Acciaio inossidabile  
Material: Stainless Steel  
Durezza: 48-52 HRC  
Hardness: 48-52 HRC



D	L	K	D1	M	H
6	12	0,2	3,5	M3	3,6
8	12	0,2	4,5	M4	4,8
10	12	0,3	5,5	M5	6
12	14	0,3	6,5	M6	8
16	14	0,3	6,5	M6	10
20	16	0,3	6,5	M6	12
25 (**)	16	0,3	6,5	M6	15

[*]	Codice Code	D	[*]	Codice Code	D
	R0140-01-0061	6		R0140-01-0091	6
	R0140-01-0062	8		R0140-01-0092	8
	R0140-01-0063	10		R0140-01-0093	10
	R0140-01-0133	12		R0140-01-0139	12
	R0140-01-0064	16		R0140-01-0094	16
	R0140-01-0065	20		R0140-01-0095	20
	R0140-01-0066	6		R0140-01-0096	6
	R0140-01-0067	8		R0140-01-0097	8
	R0140-01-0068	10		R0140-01-0098	10
	R0140-01-0134	12		R0140-01-0140	12
	R0140-01-0069	16		R0140-01-0099	16
	R0140-01-0070	20		R0140-01-0100	20
	R0140-01-0071	6		R0140-01-0101	6
	R0140-01-0072	8		R0140-01-0102	8
	R0140-01-0073	10		R0140-01-0103	10
	R0140-01-0135	12		R0140-01-0141	12
	R0140-01-0074	16		R0140-01-0104	16
	R0140-01-0075	20		R0140-01-0105	20
	R0140-01-0076	6		R0140-01-0106	6
	R0140-01-0077	8		R0140-01-0107	8
	R0140-01-0078	10		R0140-01-0108	10
	R0140-01-0136	12		R0140-01-0142	12
	R0140-01-0079	16		R0140-01-0109	16
	R0140-01-0080	20		R0140-01-0110	20
	R0140-01-0081	6		R0140-01-0111	6
	R0140-01-0082	8		R0140-01-0112	8
	R0140-01-0083	10		R0140-01-0113	10
	R0140-01-0137	12		R0140-01-0143	12
	R0140-01-0084	16		R0140-01-0114	16
	R0140-01-0085	20		R0140-01-0115	20
	R0140-01-0086	6		R0140-01-0116	6
	R0140-01-0087	8		R0140-01-0117	8
	R0140-01-0088	10		R0140-01-0118	10
	R0140-01-0138	12		R0140-01-0144	12
	R0140-01-0089	16		R0140-01-0119	16
R0140-01-0090	20	R0140-01-0120	20		

**Note:**  
\* - Immagini speculari \* - Mirror images  
\*\* - Disponibile su richiesta \*\* - Available upon request

Esempio di ordinativo: Codice  
Example of purchasing order: Code