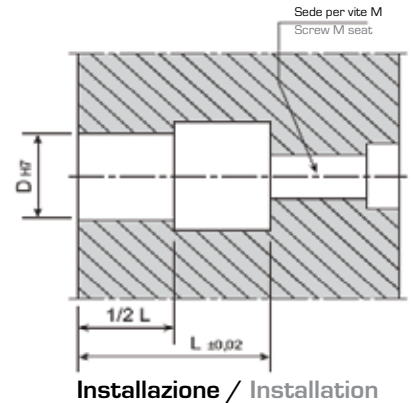


R0139

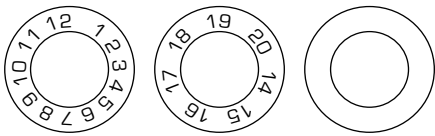
- Datario lungo
- Long date stamp



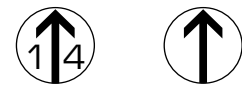
Immagine speculare
Mirror images



CORPO / OUTER INSERT



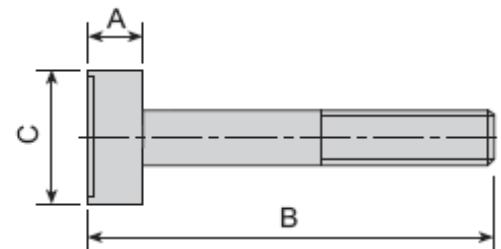
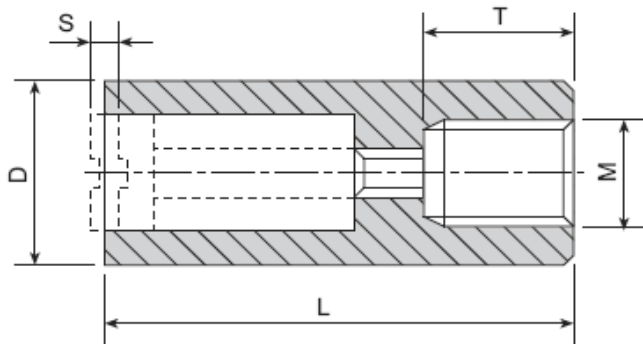
INSERTO / INNER INSERT



Codice corpo Cod. out. insert mensile / months	D	Codice corpo Cod. out. insert annuale / years	D	Codice corpo Cod. out. insert neutro / neutral	D
R0139-01-0001	05	R0139-01-0007	05	R0139-01-0013	05
R0139-01-0002	06	R0139-01-0008	06	R0139-01-0014	06
R0139-01-0003	08	R0139-01-0009	08	R0139-01-0015	08
R0139-01-0004	10	R0139-01-0010	10	R0139-01-0016	10
R0139-01-0005	12	R0139-01-0011	12	R0139-01-0017	12
R0139-01-0006	16	R0139-01-0012	16	R0139-01-0018	16

Codice inserto Cod. inner insert annuale / years	D	Codice inserto Cod. inner insert neutro / neutral	D
R0139-01-0020	06	R0139-01-0026	06
R0139-01-0020	06	R0139-01-0026	06
R0139-01-0021	08	R0139-01-0027	08
R0139-01-0022	10	R0139-01-0028	10
R0139-01-0023	12	R0139-01-0029	12
R0139-01-0024	16	R0139-01-0030	16

Esempio di ordinativo: Codice
Example of purchasing order: Code



D	L	M	T	S
5	17	M3	3,5	0,20
6	17	M3	3,5	0,20
8	20	M4	4	0,35
10	20	M5	4	0,35
12	25	M6	6	0,50
16	33	M8	8	0,60

A	B	ØC
3	13	3,1
3	13	3,1
4	14	4,6
4	14	4,6
4	17	6,4
5	23	8,4

Note: / Note:

Acciaio temperato a 50/55 HRC.
L'inserto viene fornito completo di molla.
Temperatura max di esercizio: 140° C
Tutti i datari annuali hanno validità 7 anni
Specificare anno

Material: tempered steel, hardened 50/55 HRC
All inner inserts will be furnished with spring.
Max. work temperature: 140° C
All outer inserts have 7 years of validity.
Specify years